

features and benefits

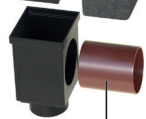
Designed with variable outlet positions on each face of the rodding box to suit the location of the outfall pipe.

Rodding boxes allow up to a 4 way connection.



Rodding boxes can be modularised to give extra depth for installation where the outfall pipe is deep within the construction.

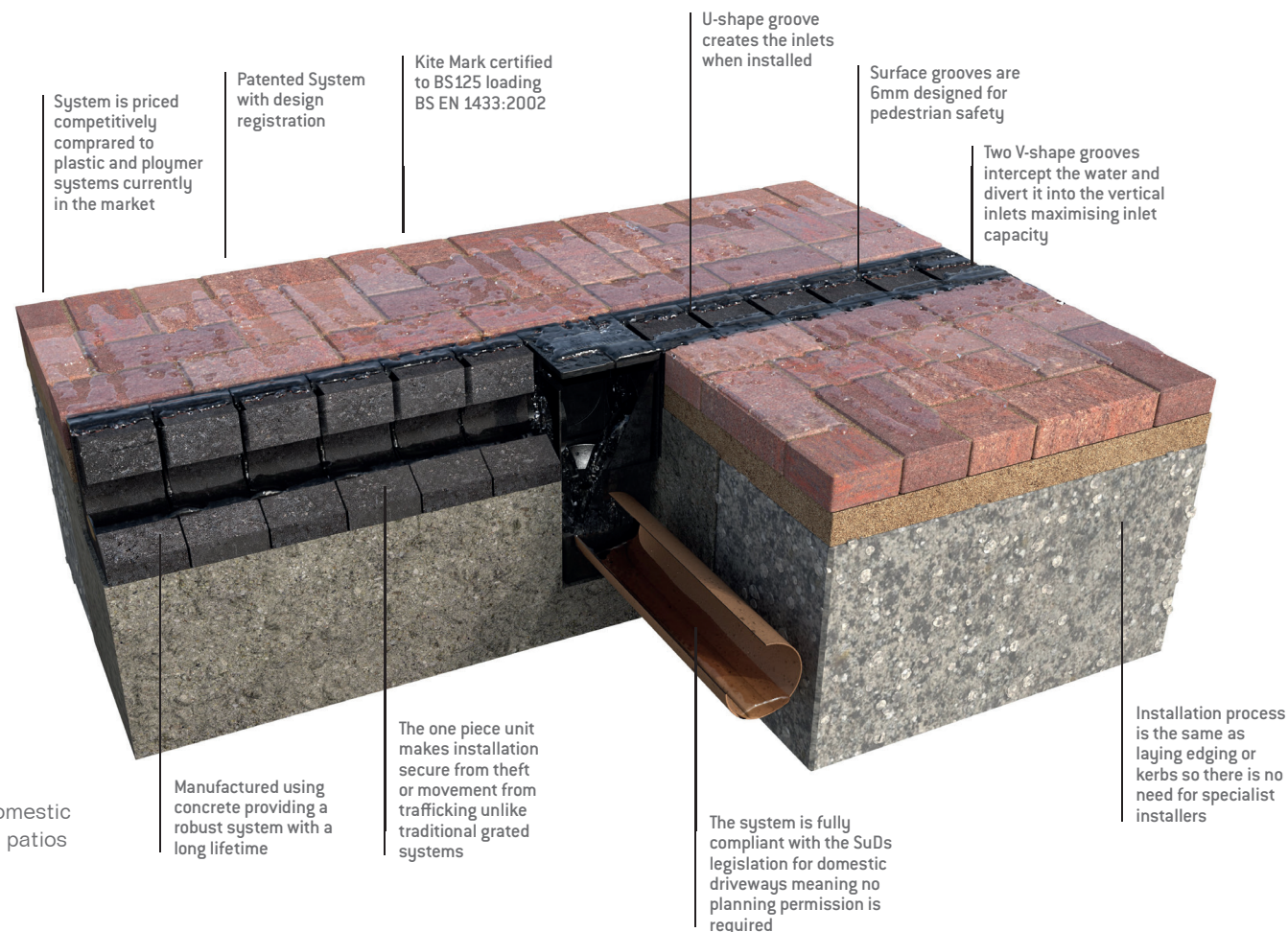
Rodding boxes at the end of the drainage run can be easily integrated with soak aways using an outfall pipe.



Rodding box allows easy and quick access for maintenance of the system using jet wash equipment or standard drainage rods.



Suitable for domestic driveways and patios



installation guide



1. Excavate a suitable strip footing to support the Drainer units



2. Drainer Outfalls and Rodding boxes should be installed first along with relevant pipe work to relevant soakaway or SuDs compliant system.



3. Before installing the Drainer units, apply a 5mm bead of M-Flex or paste M-Fix compound from the top of the aperture.



4. Lay the units onto a freshly mixed workable bedding concrete making sure you achieve a tight connection between each unit.



5. Haunch the units using bedding concrete of an appropriate thickness and depth.



6. Lay the paving flush with the top of the Drainer units. Accessories are available, please ensure you read through the full Drainer installation and maintenance guide.